



COMMERCIAL SPECIFICATION CATALOGUE



Discover the difference



Pioneer Water Tanks manufactures tanks from 6,000 litres to 2.66 million litres capacity with structural engineering suitable for rural/ domestic or commercial use using durable and 100% Australian Bluescope steel.

Any Pioneer Water Tank can be designed to suit earthquake zones, cyclonic regions, heavy industrial or highly specialised environments.

Our tanks feature the innovative and aesthetically pleasing 8-80 V-LOCK profile with protective capped bolt system and fully enclosed vertical bolt cover for optimal strength and structural integrity.

OUR COMMITMENT

Pricing

Committed to providing a competitive price and personalised service to match individual needs.

Experience

Dedicated staff with practical knowledge and years of experience.

Flexibility

We listen to your specific needs and recommend a suitable custom water storage solution.

Engineering

Through our qualified engineering personnel and independent consultant engineers, we provide high quality professional design and support services.

Installation

Thorough check methods are employed to ensure correct installation from beginning through to commissioning. Our procedures provide for ease of installation, less time on site, minimal infrastructure and construction personnel.

Associations

Pioneer Water Tanks is an associate member of several Australian and international associations involved in the design of water storage systems.

Quality & Service

Pioneer Water Tanks is committed to providing the best quality product and service from first contact to completed and tank and after sales service.

Aesthetics

Profiled wall design and wide range of colours to seamlessly integrate with the surrounding environment.

Advanced Production Technologies

Continual research and development and innovative production methods create uniform quality. A culture of continuous improvement forms a key pillar of Pioneer Water Tanks' business success.



GROSS CAPACITY CHART

Tank model	Tank diameter	Number of rings/Wall height							
		R1 1.15m	R2 2.18m	R3 3.23m	R4 4.27m	R5 5.31m	R6 6.35m	R7 7.39m	R8 8.43m
XL01	2.67m	6kL	12kL	18kL	24kL	30kL	36kL*	42kL*	47kL*
XL04	3.34m	10kL	19kL	28kL	38kL	47kL	56kL	65kL*	74kL*
XL05	4.01m	15kL	28kL	41kL	54kL	67kL	80kL	93kL	107kL*
XL08	4.68m	20kL	38kL	56kL	74kL	91kL	109kL	127kL	145kL*
XL10	5.35m	26kL	49kL	73kL	96kL	119 kL	143kL	166kL	189kL*
XL13	6.02m	33kL	62kL	92kL	122kL	151kL	181kL	210kL	240kL
XL15	6.69m	40kL	77kL	114kL	150kL	187kL	223kL	260kL	296kL
XL20	7.35m	49kL	93kL	137kL	182kL	226kL	270kL	314kL	358kL
XL23	8.02m	5kL	110kL	163kL	216kL	269kL	321kL	374kL	426kL
XL25	8.69m	68kL	130kL	192kL	254kL	315kL	377kL	439kL	500kL
XL30	9.36m	79kL	150kL	223kL	294kL	366kL	437kL	509kL	580kL
XL35	10.03m	91kL	173kL	255kL	338kL	420kL	502kL	584kL	666kL
XL40	10.70m	103kL	196kL	291kL	384kL	477kL	571kL	664kL	758kL
XL45	11.36m	117kL	222kL	328kL	434kL	539kL	645kL	750kL	855kL
XL50	12.03m	131kL	248kL	368kL	486kL	604kL	723kL	841kL	959kL
XL60	12.70m	146kL	277kL	410kL	542kL	673kL	805kL	937kL	1.10mL
XL65	13.37m	161kL	307kL	454kL	600kL	746kL	892kL	1.00mL	1.18mL
XL70	14.04m	178kL	338kL	501kL	662kL	823kL	984kL	1.14mL	1.30mL
XL80	14.71m	195kL	371kL	549kL	726kL	903kL	1.10mL	1.30mL	1.43mL
XL85	15.37m	213kL	406kL	601kL	794kL	987kL	1.18mL	1.37mL	1.57mL
XL90	16.05m	232kL	442kL	654kL	864kL	1.10mL	1.28mL	1.49mL	1.70mL
XL100	16.71m	252kL	479kL	710kL	938kL	1.17mL	1.39mL	1.62mL	1.85mL
XL110	17.38m	273kL	518kL	767kL	1.00mL	1.26mL	1.51mL	1.75mL	2.00mL
XL120	18.05m	294kL	559kL	828kL	1.10mL	1.36mL	1.63mL	1.89mL	2.16mL
XL130	18.72m	316kL	601kL	890kL	1.18mL	1.46mL	1.75mL	2.03mL	2.32mL
XL140	19.39m	339kL	645kL	955kL	1.26mL	1.57mL	1.88mL	2.18mL	2.49mL
XL150	20.05m	363kL	690kL	1.02mL	1.35mL	1.68mL	2.00mL	2.34mL	2.66mL

Note:

Allowance must be made for air gap and pipe work positioning to establish usable tank volume.

* Availability subject to site conditions.

Conversion units

1,000 litres = 1 cubic metre

3.785 litres = 1 US gallon

4.546 litres = 1 Imperial gallon

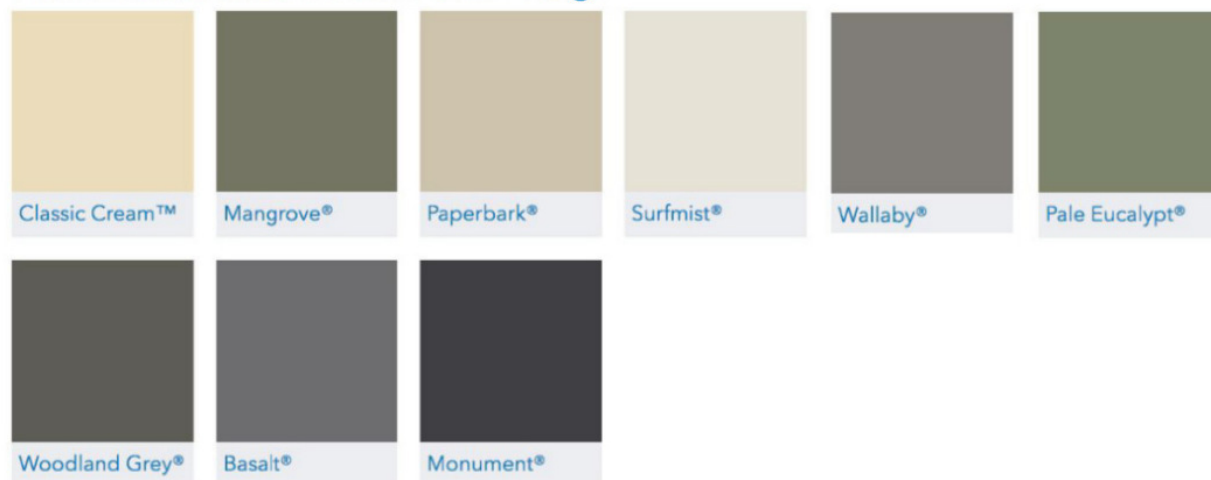
Legend

kL = kilolitres

mL = megalitres

COLOURS

PIONEER Standard COLORBOND® range



PIONEER Non-Standard COLORBOND® range



TANK DATA SHEET

Wall structure

Bluescope ZINCALUME® steel, COLORBOND® steel or COLORBOND® Ultra steel panels complying with AS1397. Most severe earthquake loads to AS1170.4. 8-80 V-LOCK wall profile to AS4600.

Steel grade

G300 ZINCALUME® steel.

Protective coating

ZINCALUME® steel (zinc/aluminium/magnesium alloy) AM125 heavy-duty coating. Also available in COLORBOND® steel.

Bolting specification

M10 - M16 galvanised, flanged head, high tensile bolts.

Dome roof

- Bluescope ZINCALUME® steel, COLORBOND® steel or COLORBOND® Ultra steel.
- Custom orb profile.
- 0.42bmt thickness.
- High tensile G550.
- Hot dipped fully self supporting galvanised roof trusses.

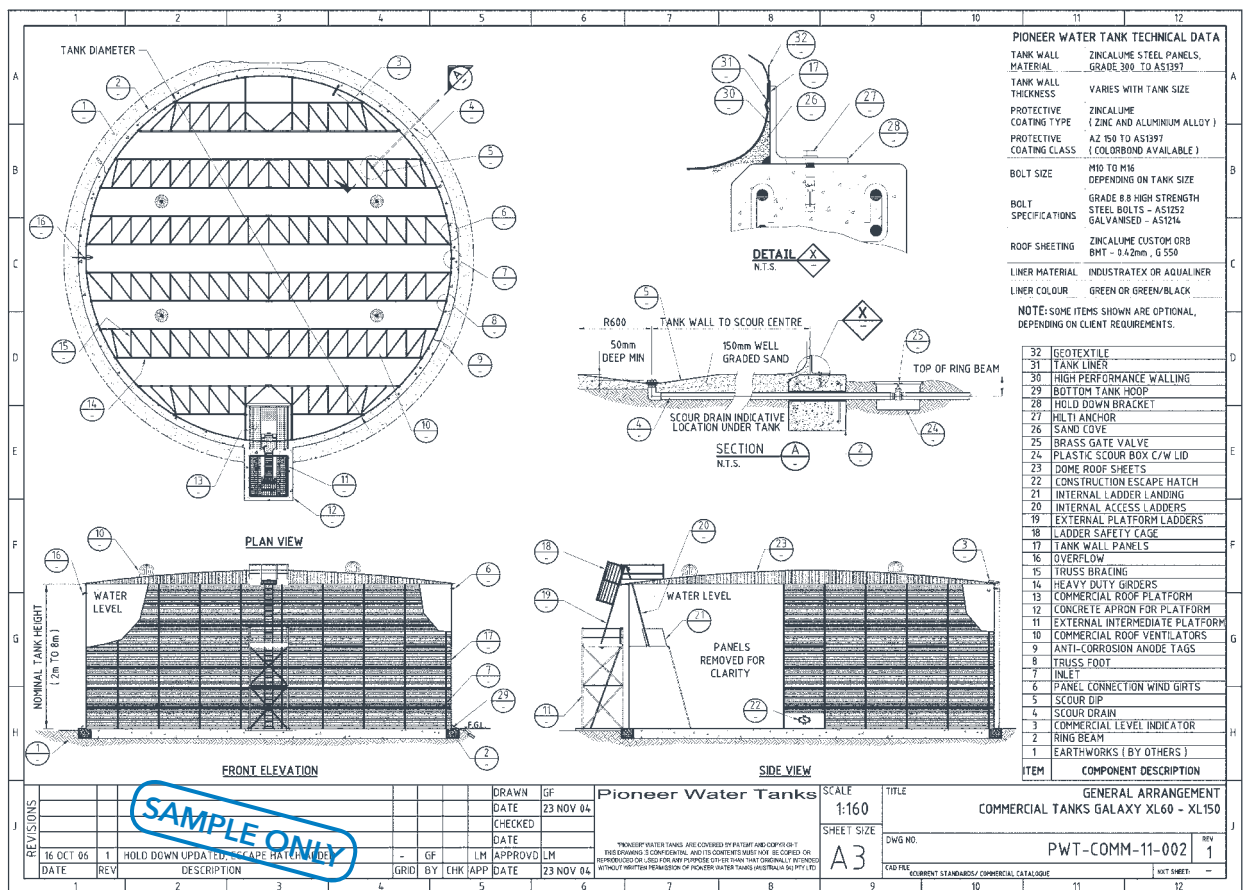
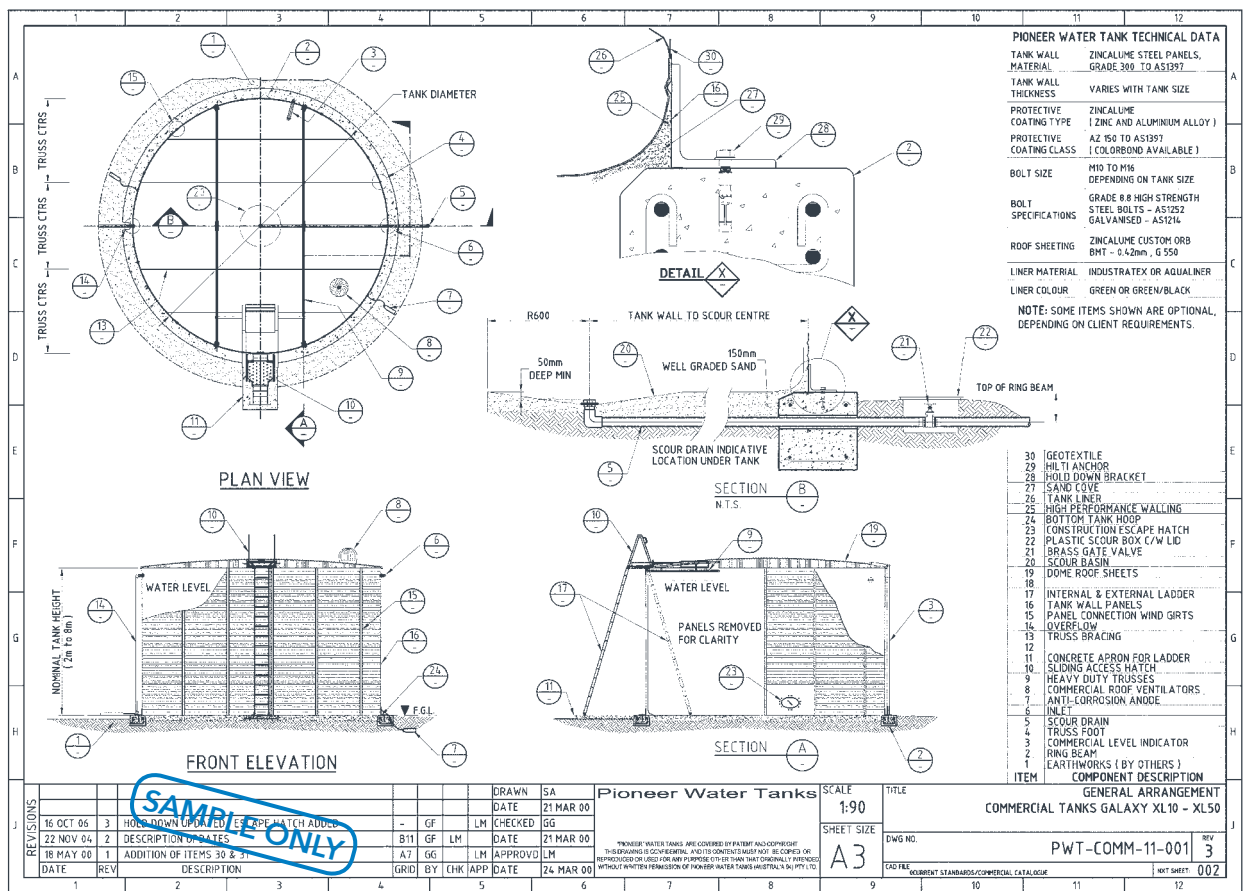
Nozzles

Nozzles are manufactured from either PE100 SDR17 HDPE or hot dipped galvanised steel (available on request).

Manufacturing and installation

This can be either client or tank specific or both. Each project will be confirmed in writing and comprise a full installation, manufacturing and installation schedule. Note that Pioneer Water Tanks requires certain information prior to commencing manufacturing. This will be advised to you at the time of proposal.

GENERAL ARRANGEMENT EXAMPLES (XL10 - XL150)



The 8-80 V-LOCK ADVANTAGE

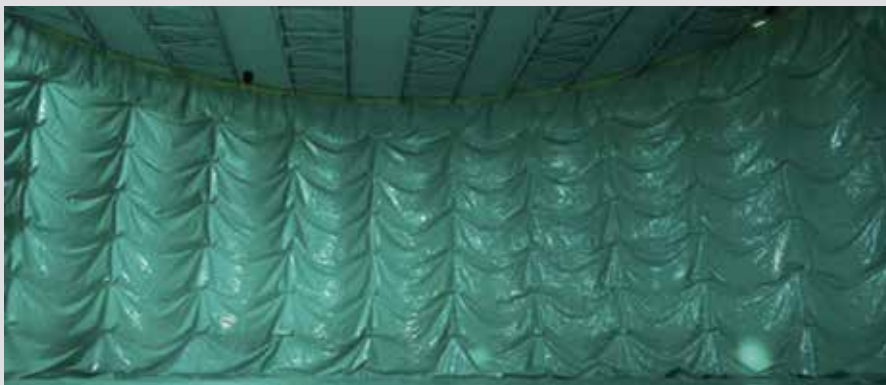
Pioneer Water Tanks' unique 8-80 V-LOCK is the result of rigorous research and development.

The 8-80 V-LOCK profile is designed to minimise stress on the liner during tank level cycling.

Specifically engineered with a flat section at the bolted panel connections, the 8-80 V-LOCK vastly improves the structural integrity and overall aesthetic appeal of your finished tank.



UNIQUE SECURED LINER



Pioneer Water Tanks understands the importance of the longevity of your tank liner.

All Pioneer Water Tanks liners are uniquely secured to the tank wall at multiple points to provide optimal support for the liner. This support prevents the liner from pulling away from the tank wall and secures it in position.

The result: less stress on the liner and prolonged service life of your tank.

TANKLINERS

Aqualiner® and Industratex® have been exclusively developed and manufactured for Pioneer Water Tanks to provide a water tight liquid storage membrane.

Strength, flex resistance, abrasion resistance, chemical resistance, water proofing and leak proofing have been considered in the design of Aqualiner® and Industratex®. Both liners can be custom manufactured for the relining of existing concrete, steel and other types of water tanks.

Primarily intended for potable water storage, your tank liner can be adapted for a variety of non-potable water grades including grey treated, bore, ground or well water.

Liner Terms and Definitions

Tensile strength:

Strength of material, measured by tensioning a 50mm wide sample in both directions - warp and weft. Result is the force measured in Newtons (N) at the point at which the material breaks.

Elongation:

During tensile test a stretch measurement is taken prior to material breaking.

Warp:

Threads stretched in a loom.

Weft:

Threads that cross the warp.

Wing tear:

Force (N) necessary to tear a sample of the material in the warp and weft weave direction. Warp test is measured by tearing in the weft direction and visa versa for the weft tear.

Tongue tear:

Similar test to wing tear, parallel cuts are made to the material to create a "tongue". Force (N) is applied tearing the material. Warp is measured by tearing in the weft direction and visa versa for the weft tear.

Coating adhesion:

Force (N) needed to separate a 50mm wide sample lamination (coating) from the weave.

Flex cracking:

Measured by flexing material until it deteriorates (measured in cycles).

UV stabilisation:

Ability of material to withstand continuous exposure to UV light.

Flume (water proof) test:

A fabricated test sample (tube) is increasingly pressurised with water until the material leaks. Measurement and inspections are conducted at regular intervals and recorded.

Abrasion resistance:

Ability of the material to withstand abrasive contact.

AQUALINER FRESH® DATA SHEET

This data sheet sets out the criteria for evaluating the suitability of the Aqualiner Fresh® as a core component of the liner tank system.

Approvals

- Australian Standard: AS/NZS 4020 - Products for use in contact with drinking water.
Tested by Australian Water Quality Centre report no: 4007/92.919.
- American Standard: NSF/ANSI Standard 61 - Drinking Water Approval. Certificate 3A240-01.
- British Standard: BS 6920 - Suitable for use in contact with potable water.
Tested by Water Regulations Advisory Scheme, test report: MAT/LAB 356M, 607M & 608M.

SANITIZED® WATER TANK TEST RESULTS

PIONEER TANK LINER Aqualiner FRESH®

Sample number:	2017-1233-01	Received:	04.09.2017	
Business:	POLYMER	Type:	Quality control	
Identification:	AQS Trafab			
Main Component:	PE			
Minor Component:	PP			
Appearance:	Black/White			
Field of Application:	Water Tank Liner			
Test results of the SANITIZED-laboratory				
Quantitative analysis for determination of the bacteriostatic activity				
Method	Test point	Activity	Reduction in %	Evaluation
JIS Z 2801:2010	Klebsiella pneumoniae ATSC 4352	1,50	96,84	Good effect

COMPETITORS TANK LINER

Sample number:	2017-1233-04	Received:	04.09.2017	
Business:	POLYMER	Type:	Quality control	
Identification:				
Main Component:	PE			
Minor Component:	-			
Appearance:	Black/Silver			
Field of Application:	Water Tank Liner			
Test results of the SANITIZED-laboratory				
Quantitative analysis for determination of the bacteriostatic activity				
Method	Test point	Activity	Reduction in %	Evaluation
JIS Z 2801:2010	Klebsiella pneumoniae ATCC 4352	-0,10	0,00	Insufficient effect

Tensile strength:

Newtons per 50mm
(AS2001.2.3)
Warp: 1901 N
Weft: 1353 N

Elongation at break:

(AS2001.2.3)
(AS4878.6 - method 1)
Warp: 24.8%
Weft: 18.8%

Wing tear:

Newtons per 50mm
(AS2001.2.10)
(AS 4878.7 - method A2)
Warp: 255 N
Weft: 135 N

Coating adhesion:

Newtons per 50mm
(AS4878.2 - preparation 2)
75-85 N

Flex cracking:

(AS4878.9 - method B),
97,000 cycles

Max/min temperature:

-30° C to +70° C

UV stabilisation:

Both faces have UV resistance and therefore may be exposed to the sun. However excessive exposure and temperature may dry and shrink the material.
It is Pioneer's recommendation that the Aqualiner® be covered.

Material thickness:

0.60mm
Unit mass/weight (AS4878.2):
405 grams per square metre.

Seam weld:

25mm weld with 25mm seal tape welded to both sides covering edges of fabric.

Flume test:

Water beads: 20 metres of water head pressure.
Burst: 20 metres of water head pressure.

Chemical resistance:

Aqualiner® is resistant to various chemicals. To be certain, we recommend a chemical analysis report be completed to confirm suitability.

pH: 5 - 10
Chlorine: 3 -5ppm

Note: Intense levels of chlorine such as shock treatment and tablets can have an adverse affect on the Aqualiner®. It is therefore recommended controlled dosing systems be used.

Special comments:

Aqualiner® can store a wide variety of non-aggressive and aggressive waters however you should also be considerate that the steel structure may not be so readily accepting.

INDUSTRATEX® DATA SHEET

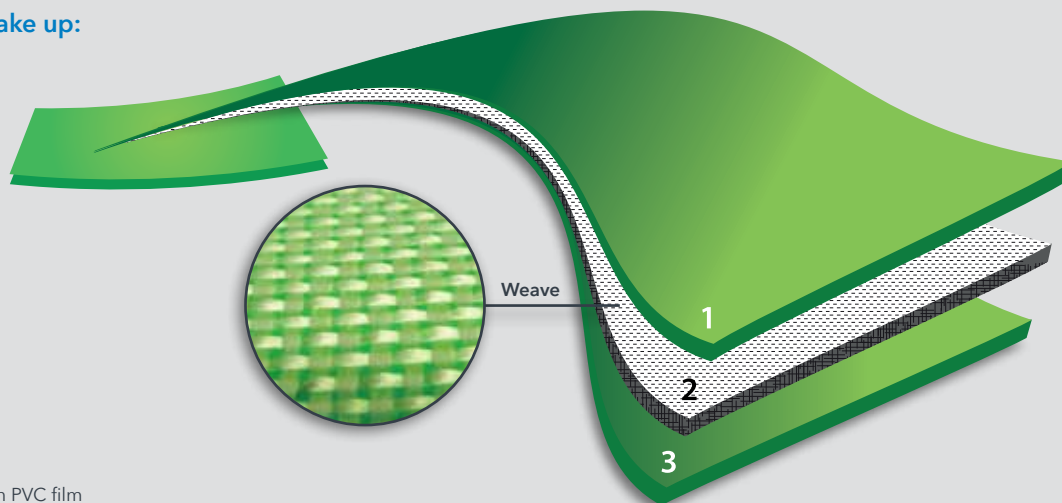
This data sheet sets out the criteria for evaluating the suitability of Industratex® as a core function of the liner tank system.

Approvals

- Australian Standard: AS/NZS 4020 - Products for use in contact with drinking water. Tested by Australian Water Quality Centre report no: 4007/92.453.
- American Standard: NSF/ANSI Standard 61 - Drinking Water Approval. Certificate 3A240-02.

Specifications and data

Material make up:



Layer 1 - Green PVC film

Layer 2 - Polyester weave

Layer 3 - Green PVC film

Tensile strength:

Newtons per 50mm
(AS2001.2.3)

Warp: 2600 N

Weft: 2400 N

Tongue tear:

Newtons per 50mm
(BS3424.5)

Warp: 550N

Weft: 450N

Coating adhesion:

Newtons per 50mm
(AS1441.1973)

90 N (min)

Flex cracking:

(AS 1441.6)

400,000 cycles

Max/min temperature:

-20° C to +50° C

Stabilisation:

Material is UV stabilised therefore may be exposed to the sun. Excessive exposure and temperatures may dry and shrink the material. It is Pioneer's recommendation that all Industratex® liners be covered.

Material thickness:

0.60mm

Unit mass/weight:

610 grams /m2

Seam weld:

25mm weld

Flume (water proof) test:

Water beads: 20 metres of water head pressure.

Burst: 25 metres of water head pressure.

Chemical resistance:

Industratex® is resistant to various chemicals, but to be certain if suitable for your application we recommend a chemical analysis report be forwarded to confirm.

pH: 5 - 10

Chlorine:

Maximum 50ppm

Note: intense levels of chlorine such as shock treatment and tablets can have an adverse affect on the Industratex®. It is therefore recommended that controlled dosing systems be used.

Recommended applications:

All water storage: potable, ground, bore well, water, river, spring water and seawater.

Special comments:

Industratex® can store a wide variety of non aggressive and aggressive waters however you should also be considerate that the steel structure may not be so readily accepting.

ROOF OPTIONS

Pioneer Water Tanks has invested extensive effort developing a roof structure that is not only easy to install but stronger and easily adaptable for most applications.

The innovative truss foot connection allows a flush strong bolted connection with the tank wall, resulting in direct load transfer from roof structure to tank wall and then to the ground.

All roof structures utilise the strength of square hollow sections (SHS), fully welded and post galvanised to build a strong, robust structure that will perform in all conditions.

Additionally, all dome roof structures are carefully engineered to achieve load paths of uniform capacity to maximise cost efficiencies.

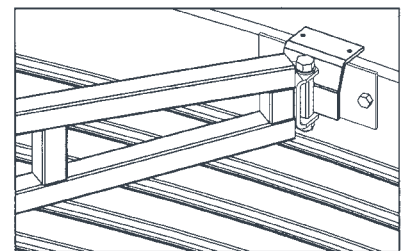
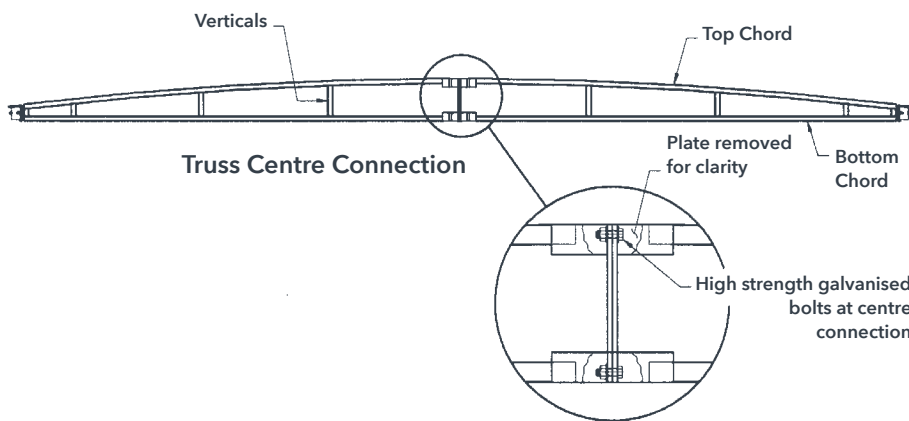


ROOF OPTIONS: INDUSTRY STANDARD

This is a robust engineered roof structure comprising SHS tube members fabricated into welded roof trusses with swivel truss feet to enable secure alignment with the tank wall.

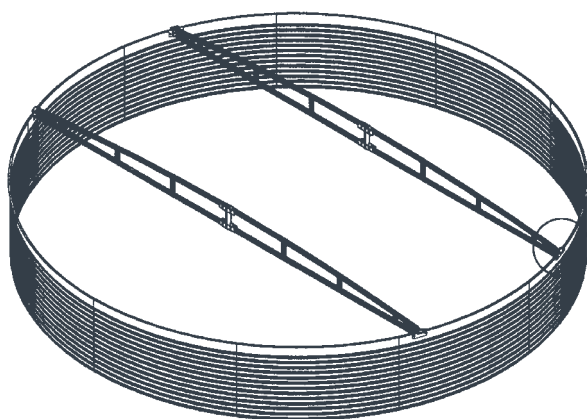
The SHS trusses are high strength/high ductility and are engineered to provide direct load paths for all loads that are incident to the roof into the tank wall. The structure is typically galvanised to ensure excellent performance and long life. The roof structure is capable of handling construction and maintenance loads as required by AS1170.1.

As with most light building-type structures, personnel need to restrict their footprints to the lines of the trusses. This roof is suitable for most applications where standard access hatches are required, and when not located in an exposed area subject to gales. These roofs are designed in accordance with the relevant clauses of AS1170.0, AS1170.1 and AS1170.2, and can withstand regional wind speeds of up to 43 metres per second, as specified in AS1170.2.



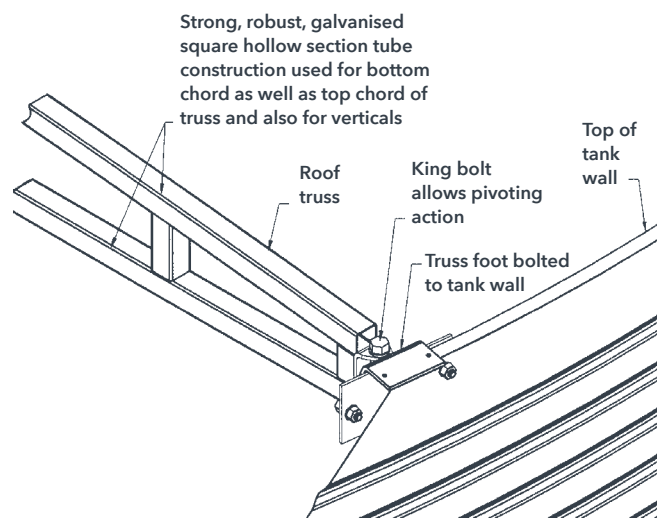
View of truss connection to tank wall from inside

Pivoting action of truss enables correct alignment with tank wall, no matter where the truss lands



Plan of Tank

Engineered roof structure design assures properly proportioned structural elements and load transfer from the roof to the ground.

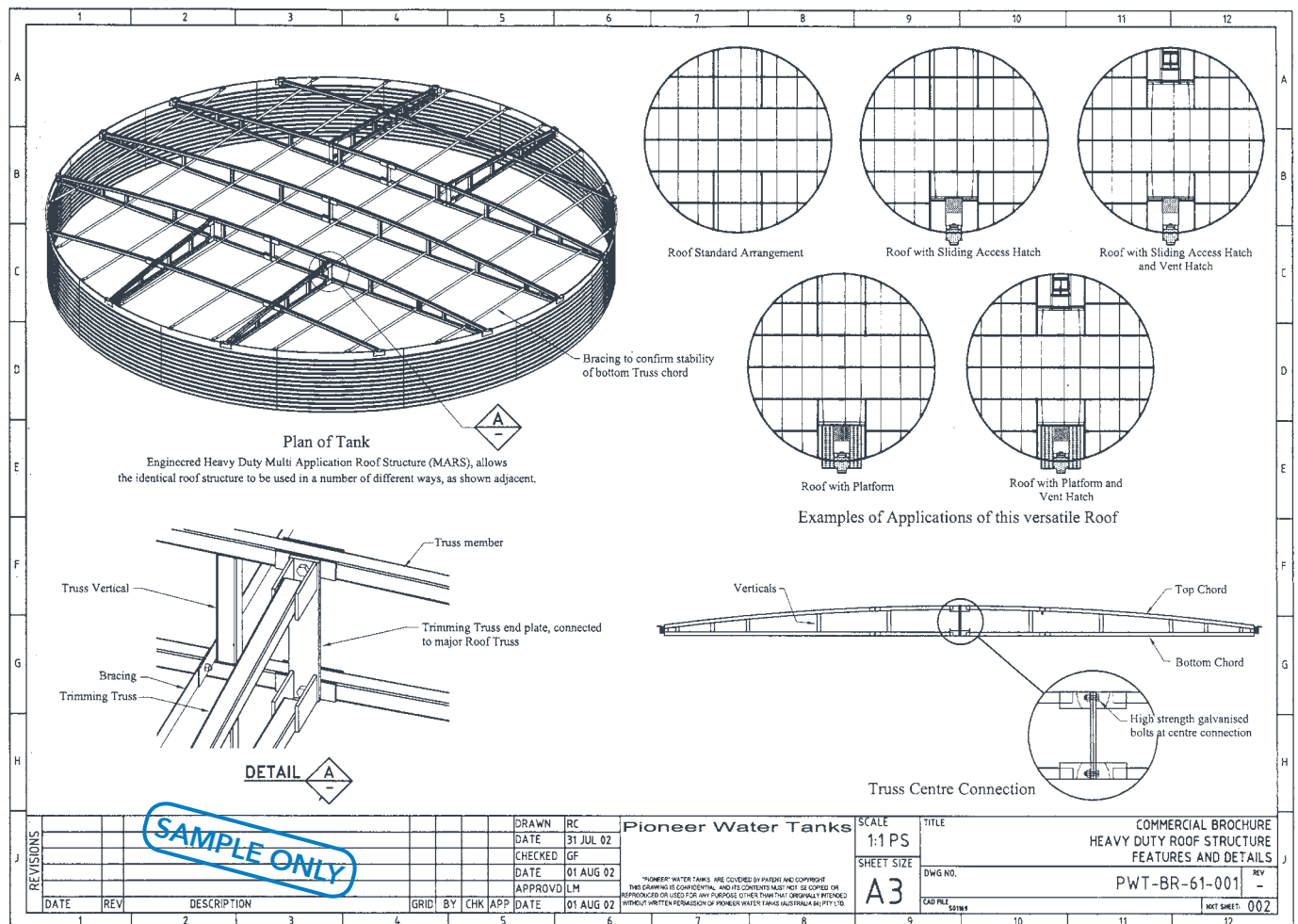


ROOF OPTIONS: HEAVY DUTY

The heavy duty roof is designed in accordance with the relevant clauses of AS1170.0, AS1170.1 and AS1170.2 to withstand minimum regional winds of up to 43 metres per second.

Embodying the features of the industry standard roof design, the heavy duty tank roof is capable of handling heavier loads arising from larger platforms such as the two metre by two metre roof platform and handrails.

The heavy duty roof has been structurally designed to enable mounting of ancillary features such as a vent hatch on one side of the roof diametrically opposite the access hatch.

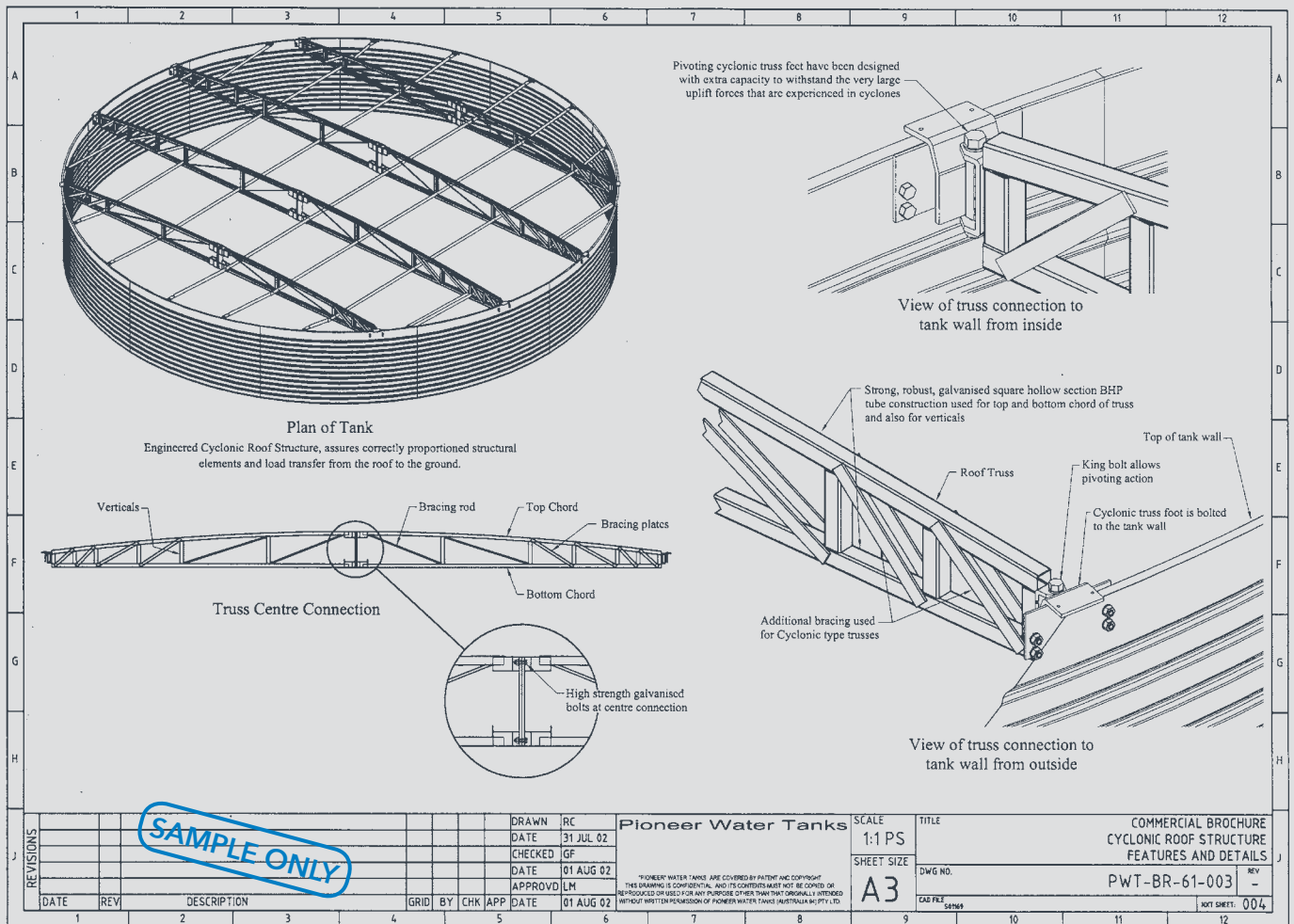


ROOF OPTIONS: CYCLONIC

Two cyclonic roof designs are available for Cyclonic Regions C and D in accordance with the relevant clauses of AS1170.0, AS1170.1 and AS1170.2.

Regional wind speeds in accordance with AS1170.2 for Region C and Region D cyclonic roofs are 65 metres per second and 82 metres per second respectively.

The cyclonic roofs embodies the features of the heavy duty roof design with roof trusses of greater depth and closer spacing to withstand the higher wind velocities expected in Cyclonic Regions C and D.

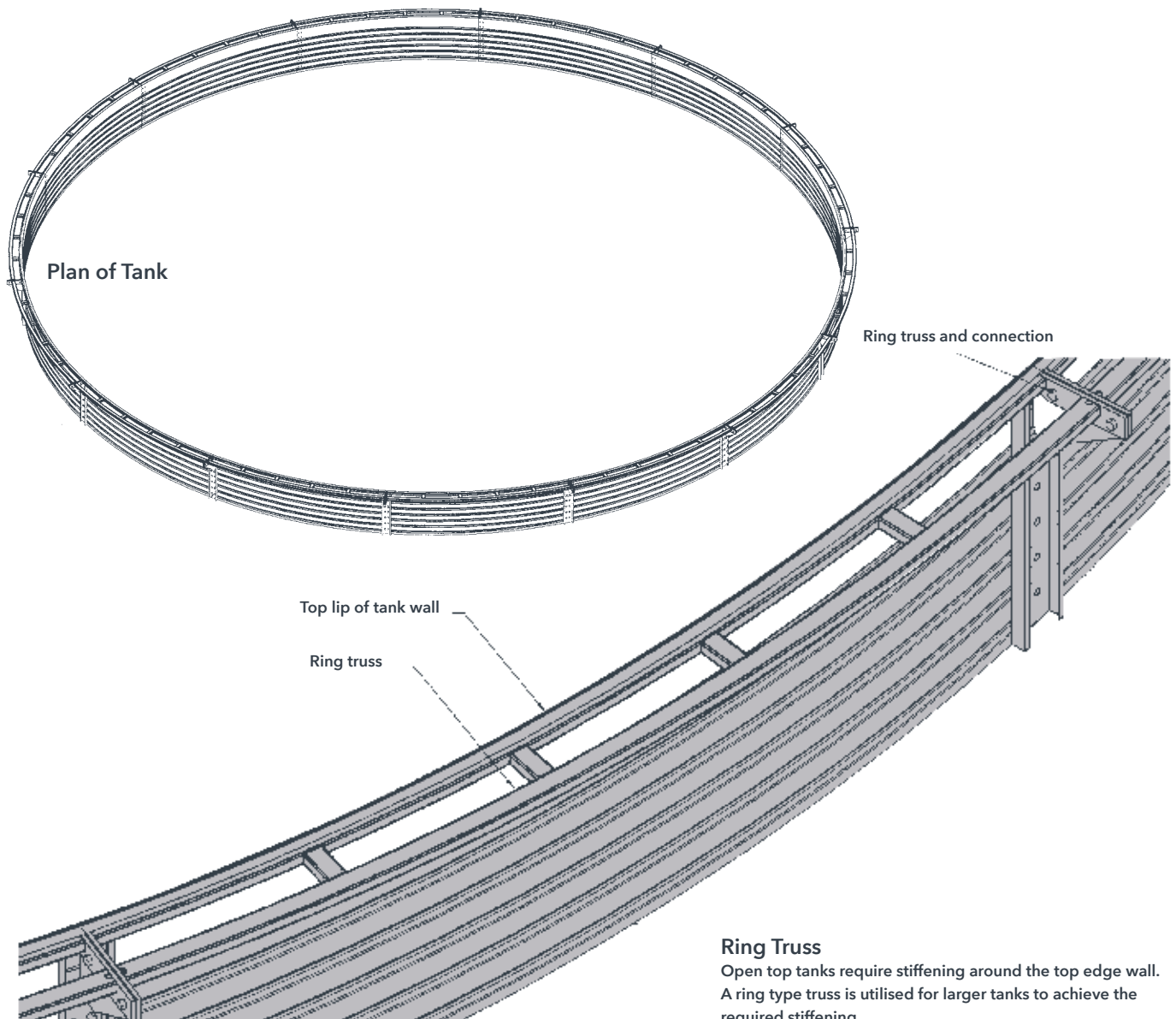
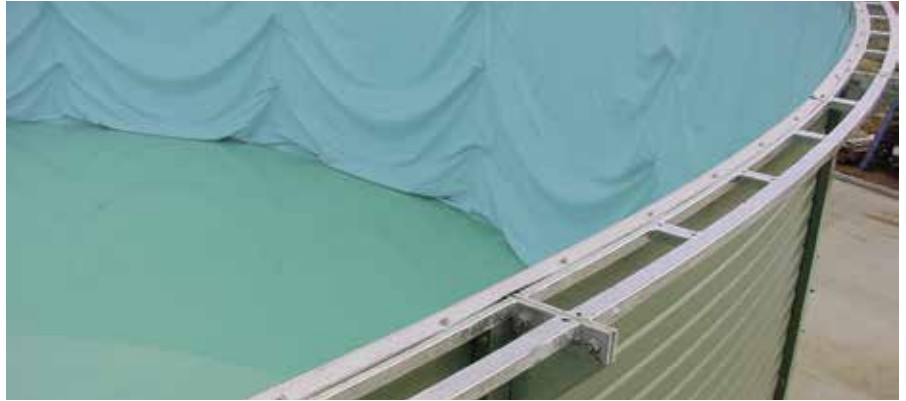


ROOF OPTIONS - OPEN TOP TANKS

Pioneer Water Tanks have developed a system for tanks without the need for a roof structure.

The open top tank ring truss gives superior strength and stiffness to the top edge of the tank body as shown in the images below.

This simple, but very effective solution works very well for tanks in the effluent treatment industry whereby special ring trusses must be designed to accommodate loads imposed from equipment such as floating aerators.



Ring Truss

Open top tanks require stiffening around the top edge wall. A ring type truss is utilised for larger tanks to achieve the required stiffening.

NOZZLES AND FITTINGS ORIENTATION

CLIENT ORDER NO.	PIONEER JOB NO.	TANK SIZE: XL13/03	TANK Ø: 6.02	CUST:
------------------	-----------------	--------------------	--------------	-------

EXAMPLE ONLY

NOZZLE SCHEDULE					
NOZZLE	SIZE	Material	Type	DESCRIPTION	External flange
N1	350	HDPE		Inlet c/w Deflector	E
N2	350	HDPE		Overflow c/w Bellmouth	E
N3	350	HDPE		Outlet c/w Vortex Inhibitor	E
N4	100	PVC		Floor Scour Drain	
N5					
N6					
N7					
N8					
N9					

NOZZLE SPECIFICATION DOCUMENT		Revised 12 May 2005
Client:	Notes: Preliminary Drawing, Please confirm nozzle & accessories positioning	Pioneer Water Tanks
Attn:		
Fax:		
Approval:		

First Issued	ZINCALUME / COLORBOND®	Revision Date	
	Reference No.	000000	Revision No.

Nozzles

Pioneer Water Tanks has the flexibility to insert nozzles through the tank wall, roof or floor to suit most flange tables (BSP, D, E, DN, DIN or ANSI) with polyethylene or galvanised steel fitting also available.

Valves

Pioneer Water Tanks stocks a selection of valves including ball valves, butterfly valves, float control valves, diaphragm valves, check valves and electronic level sensors.

Nozzle orientation

The position and size of tank nozzles will determine the effective (or usable) storage capacity of your tank. Clients must nominate the position of each nozzle, inlet, outlet, overflow and the line to match existing or new pipe work prior to manufacture commencing.

The following nozzle orientation drawings are examples of plans that must be approved by the client prior to construction of your tank.

INDICATIVE ONLY - DO NOT DESIGN BEFORE CONFIRMING VERTICAL LOCATIONS WITH PWT.

(UPPER LIMITS)

INLETS & OVERFLOWS

OUTLETS

(LOWER LIMITS)

AVAILABLE 50mm OUTLET CENTRES

AVAILABLE NB FLANGE CENTRES

GROUND LEVEL

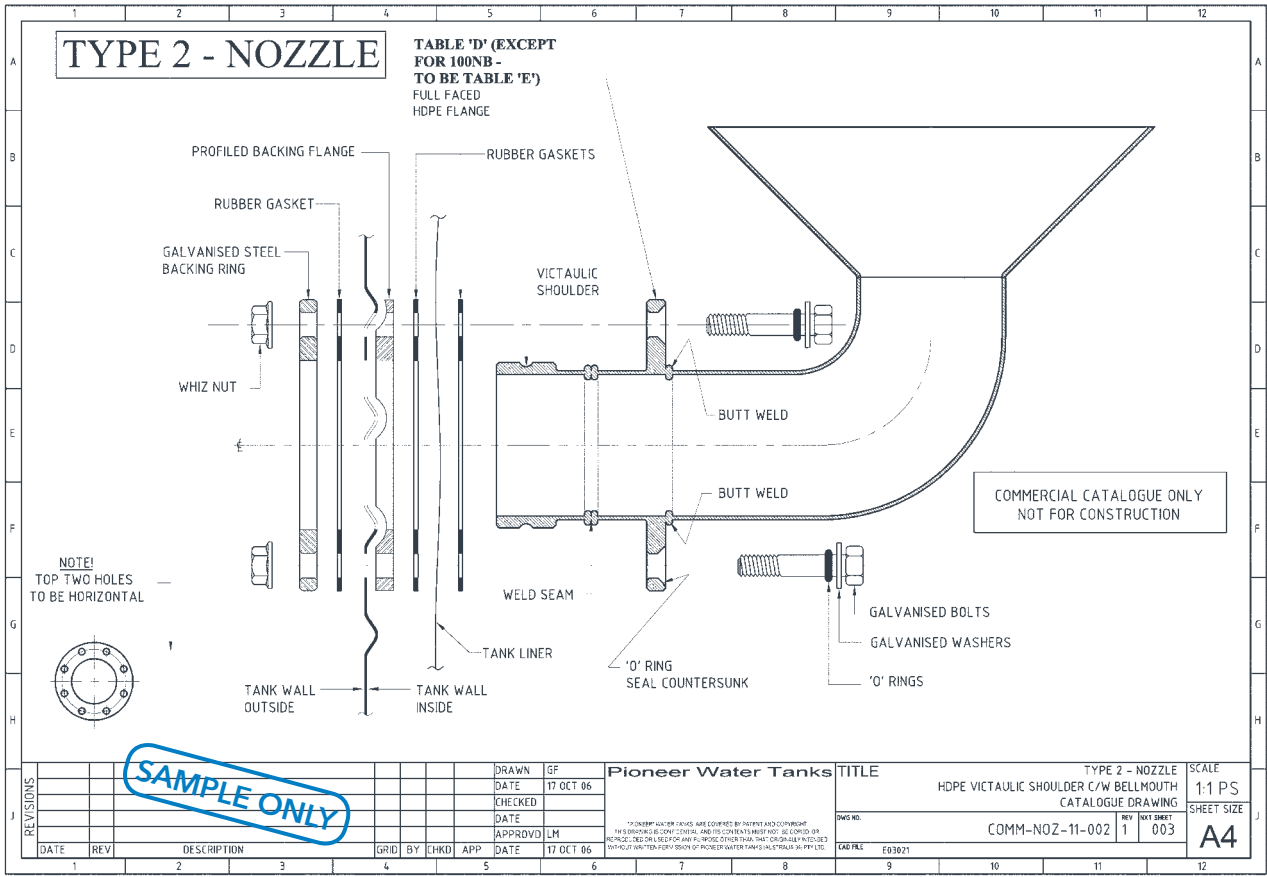
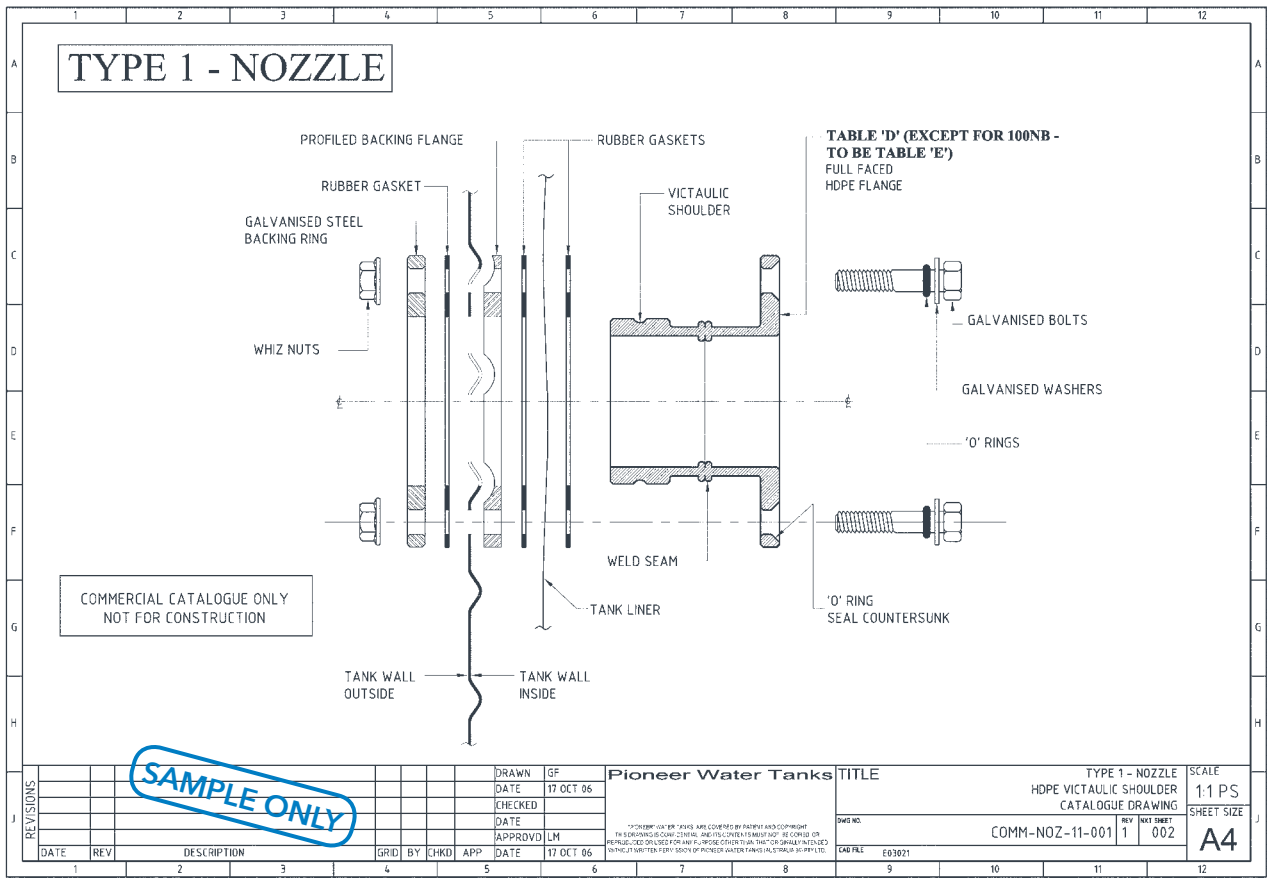
COMMERCIAL BUILD ONLY

NOTE: 1. COMMERCIAL BUILD SHOWN
2. ANTI-VORTEX FITTINGS HAVE SPECIAL LIMITS

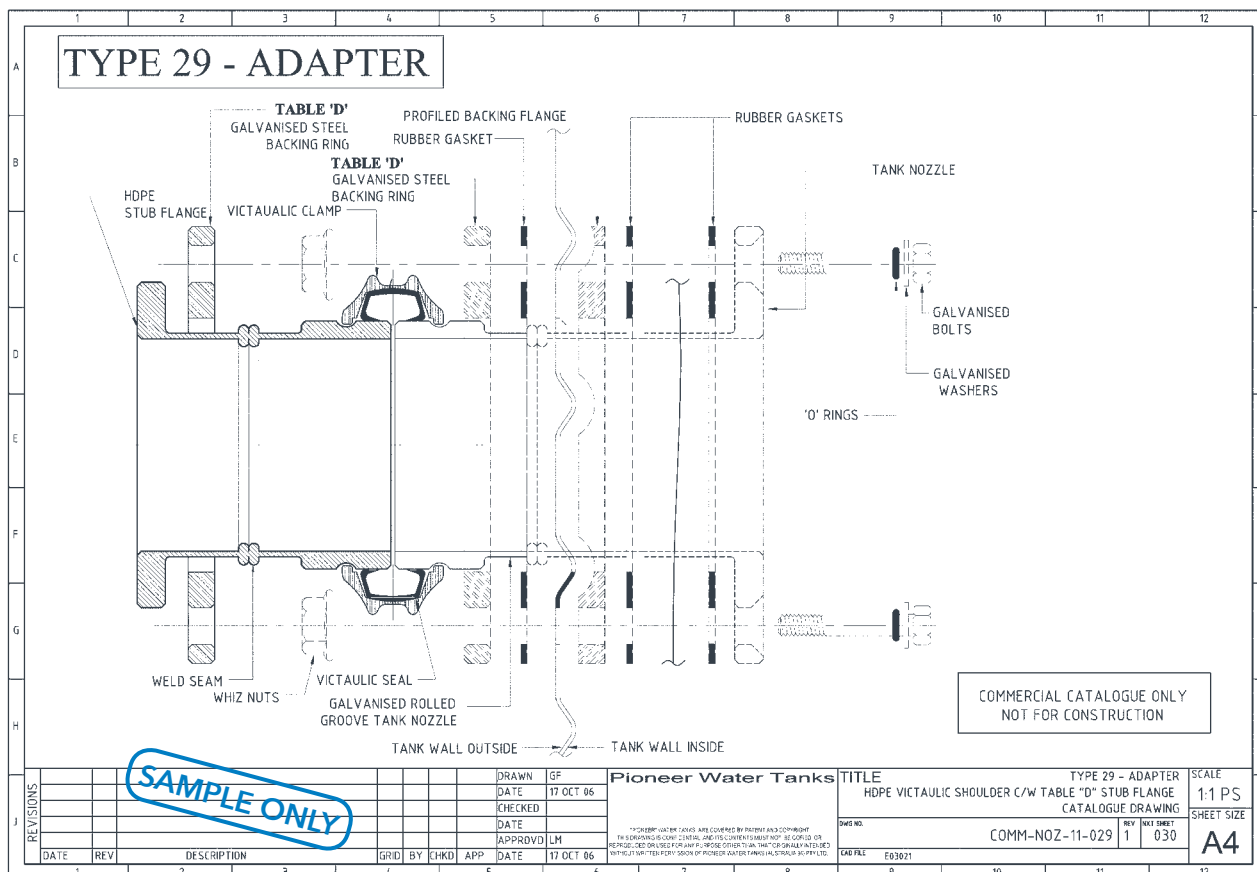
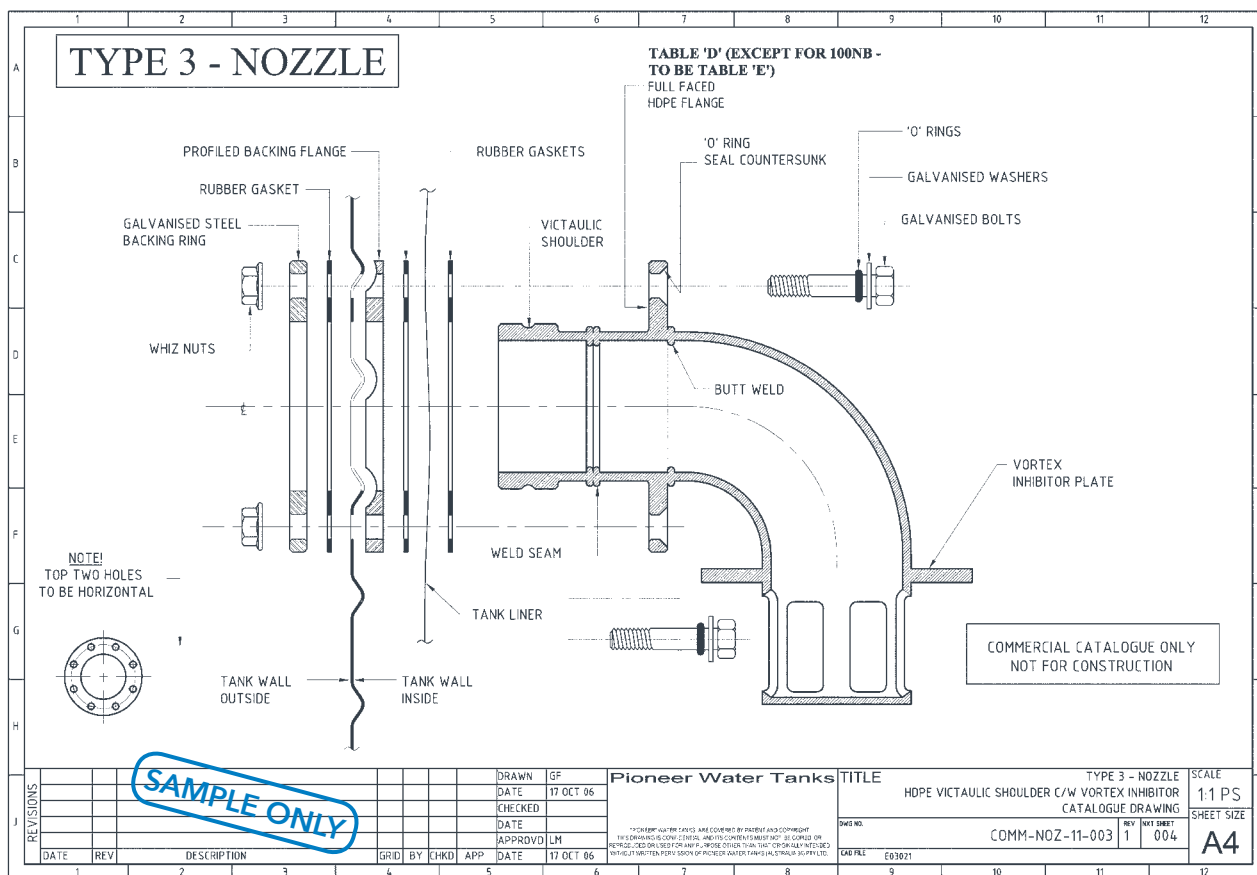
SAMPLE ONLY

Pioneer Water Tanks				TITLE		SCALE		SHEET SIZE	
PIONEER WATER TANKS ARE DESIGNED BY PWT AND COPYRIGHT THIS DRAWING IS CONFIDENTIAL. NO OTHER CONTENTS MAY NOT BE COPIED OR REPRODUCED OR USED FOR ANY PURPOSE OTHER THAN THAT ORIGINALLY INTENDED WITHOUT WRITTEN PERMISSION OF PIONEER WATER TANKS (AUSTRALIA) PTY LTD.				GALAXY COMMERCIAL WALL PANELS POSSIBLE NOZZLE HEIGHT CENTRELINES		1:1 PS		A4	
				DWG NO.		REV / NEXT SHEET			
				STDG-N0Z-TBL-001		4			
				CUD FILE		OCCURRENT STANDARDS / COMMERCIAL CATALOGUE			
				DRAWN		SA			
				DATE		01 MAR 02			
				LM		TK			
				GH		GF			
				DATE		DATE			
				APPROVD		APP			
				BY		CHKD			
				GRID		BY			
				DESCRIPTION					
				NOZZLE POSITION UPDATE INLET & O/FLOWS COMB.					
				HEIGHTS CORRECTED, INLETS / OVERFLOWS SPLIT					
				GENERAL UPDATE					
				GENERAL UPDATE					
				DATE		REV			
				26 JUL 07		4			
				13 SEP 05		3			
				10 AUG 05		2			
				23 NOV 04		1			
				DATE		REV			

NOZZLE AND FITTINGS DRAWING SAMPLE



NOZZLE AND FITTINGS DRAWING SAMPLE



LADDERS AND ACCESS HATCHES

Pioneer Water Tanks ladders and platforms are specifically designed to suit a range of access requirements.

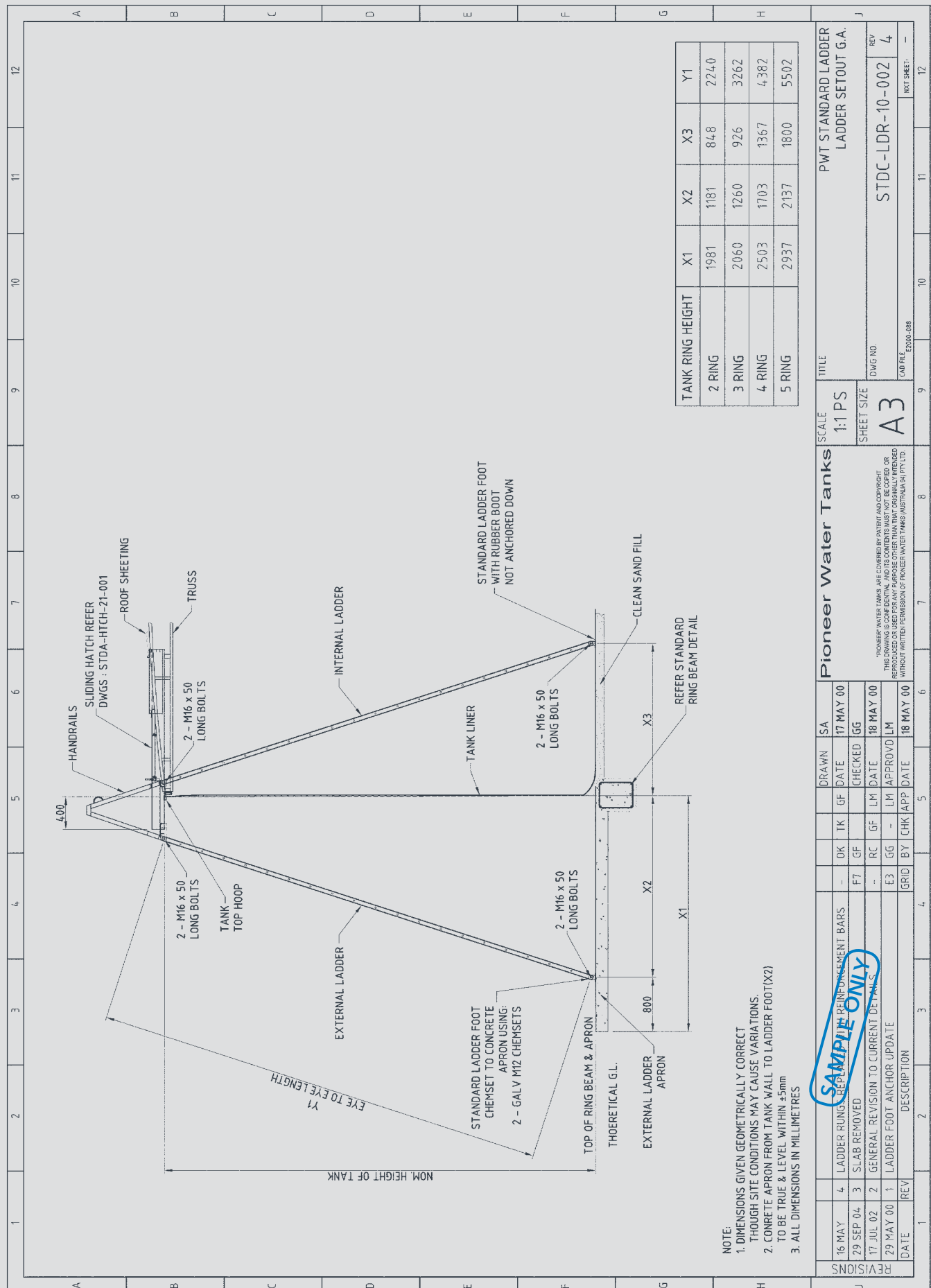
A range of internal and external ladders have been developed to comply with relevant sections of the Australian Standards (AS1657) or customer requirements.

All ladders are hot dipped galvanised or produced in stainless steel, fibreglass, aluminium or powder coated steel.

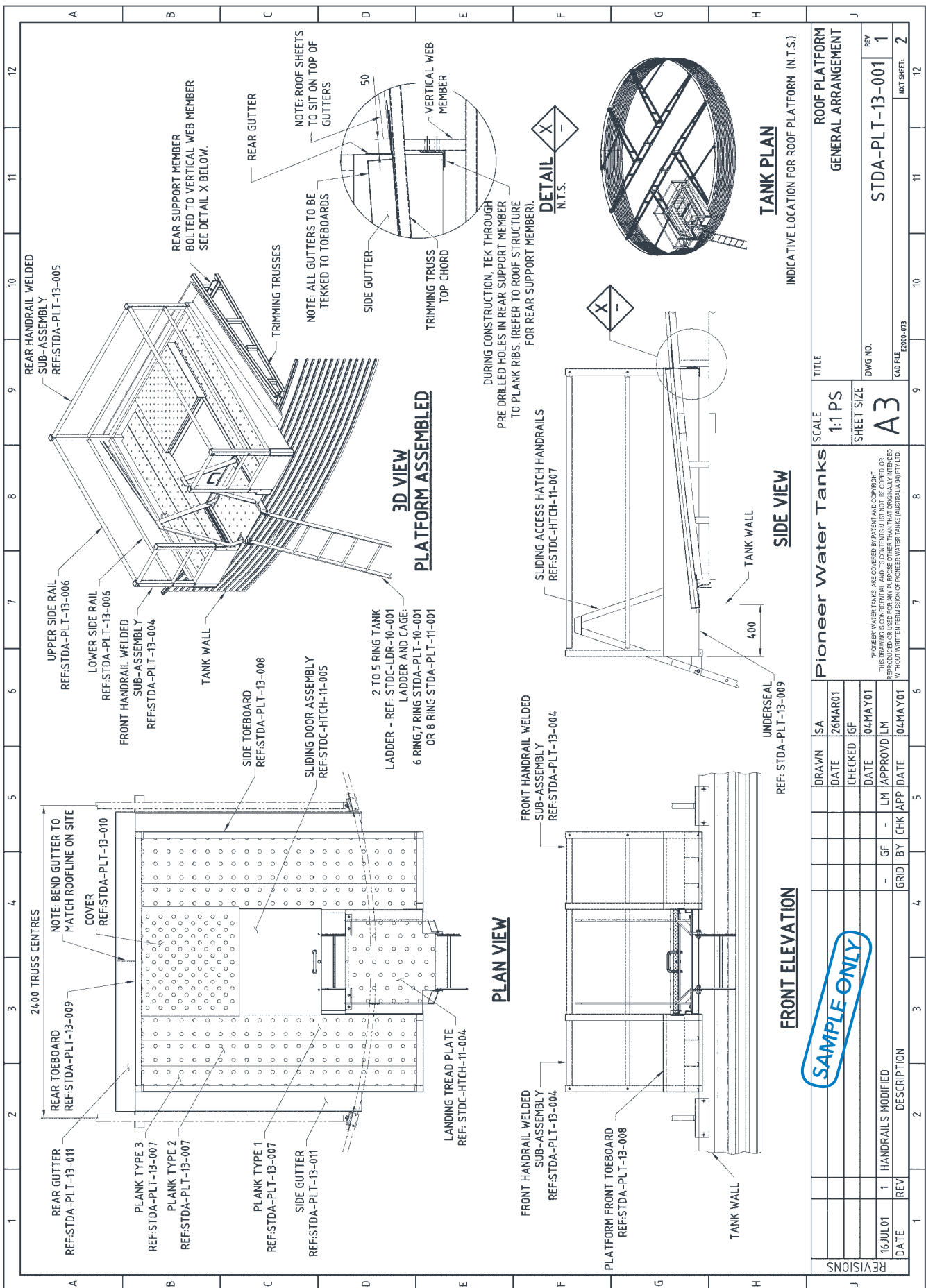
All commercial style ladders accommodate external and internal platforms, requirements for cages and heights of up to eight metres. These ladders are designed to connect with either the Pioneer Water Tanks roof platform or commercial sliding access hatch.



FIXED LADDER DRAWING SAMPLE

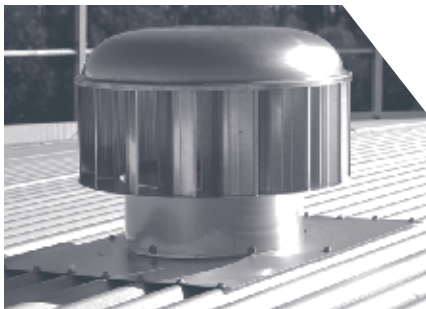


PLATFORM ACCESS HATCH DRAWING SAMPLE



[illegible]

ACCESSORIES



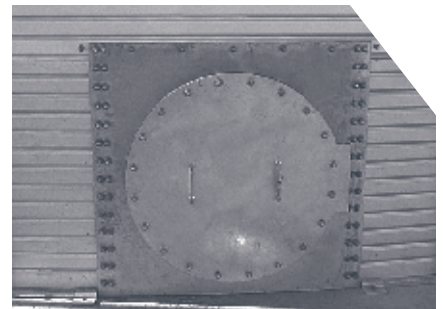
Ventilation

Airflow is very important when personnel have to enter the tank for routine maintenance checks or remove airborne pollutants and excess condensation from your tank. Procedures for working in confined spaces are recommended.



Scour box

Protects the scour valve from accidental damage or tampering.



Side wall access hatch

The side wall access hatch allows access to the inside of the tank from ground level in case of an emergency.



Pipe brackets

Pipe brackets are used to stabilise external piping. It is the client's responsibility to ensure ground pipework is appropriately supported.



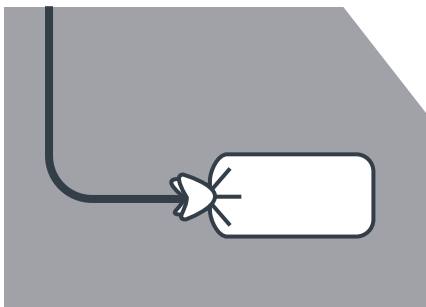
Fascia

The roof fascia conceals the trimmed edge of the roof sheeting and is ribbed in the same pattern as the wall panels to improve the overall aesthetics of your tank.



Level indicators

Level indicators can be externally mounted to rural or commercial tanks up to eight metres in height to display the level of the water within the tank.



Anode

Anode: Magnesium alloy

Cable: PVC insulated and sheathed 6mm ø cross sectional area

Bag material: calico

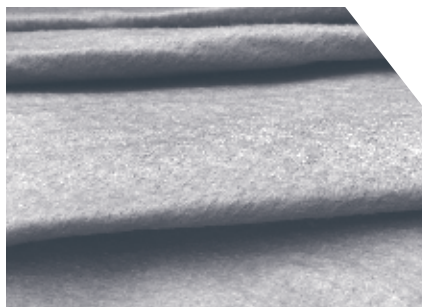
Back fill mixture:

A premixed backfill surrounds the magnesium block. The ingredients are mixed in the following proportions as required by Australian Standards (AS 2239):

Bentonite 50%

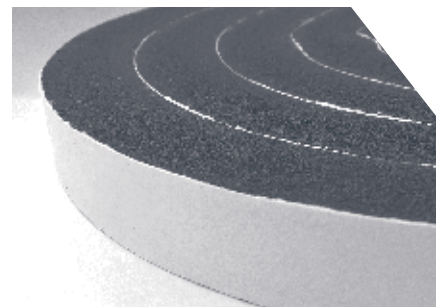
Gypsum 45%

Sodium Sulphate 5%



Geotextile

A 100% polyester non-woven material with high breaking strength. We recommend geotextile when clean sand is difficult to source and protection is required against sharp objects such as stones or rocks that may damage or puncture the liner base.



Dust seals

Protects your stored water from dust, insects and frogs by installing dust seal between the corrugated roof and the top edge of the tank.

SITE AND FOOTING PREPARATION



TANK SITE REQUIREMENTS:

- For commercial size tanks, Pioneer Water Tanks requires a concrete ring beam foundation. Some exclusions apply. Please consult Pioneer Water Tanks for more details.
- It is necessary to construct a level area three to four metres larger than the diameter of the ring beam. The sand inside the ring beam should be a depth of 100 millimetres and compacted. At least one metre clear area is required all around the tank for construction.
- Site preparation must be completed prior to the arrival of installers.
- For sloping sites, adequate retaining and drainage must be installed prior to completion of the tank construction. Professional engineering advice should be sought on the retaining and drainage requirements.
- Pioneer Water Tanks guidelines have to be met to prevent re-charges for cost of additional remedial works that may be required. In the event our crew needs to stand down due to delays or incomplete site preparations, additional costs will be incurred by the client.
- Tanks must be commissioned upon completion of construction as per Pioneer Water Tanks commissioning procedures. If your tank has not been commissioned, Pioneer Water Tanks must be consulted prior to the filling of the tank.

SITE REQUIREMENTS – RING BEAM FOOTINGS

Tank Model	Diameter (m)	Ring Beam Cross Section : Breadth x depth (mm)						
		R2	R3	R4	R5	R6	R7	R8
XL01	2.674	450 x 250	450 x 250	450 x 400	600 x 400	650 x 500	N/A	N/A
XL04	3.342	450 x 250	450 x 250	450 x 300	450 x 400	500 x 500	600 x 600	N/A
XL05	4.011	450 x 250	450 x 250	450 x 300	450 x 400	600 x 400	600 x 600	N/A
XL08	4.679	450 x 250	450 x 250	450 x 300	450 x 400	500 x 400	500 x 500	650 x 500
XL10	5.348	450 x 250	450 x 250	450 x 250	500 x 300	450 x 400	600 x 400	550 x 500
XL13	6.016	450 x 250	450 x 250	450 x 250	450 x 300	450 x 400	550 x 400	500 x 500
XL15	6.685	450 x 250	450 x 250	450 x 250	450 x 300	450 x 400	500 x 400	500 x 500
XL20	7.353	450 x 250	450 x 250	450 x 250	450 x 300	500 x 300	450 x 400	550 x 400
XL23	8.021	450 x 250	450 x 250	450 x 250	450 x 300	450 x 300	450 x 400	500 x 400
XL25	8.690	450 x 250	450 x 250	450 x 250	450 x 300	450 x 300	450 x 400	450 x 400
XL30	9.358	450 x 250	450 x 250	450 x 300	450 x 300	450 x 300	450 x 400	450 x 400
XL35	10.027	450 x 250	450 x 250	450 x 300	450 x 300	450 x 300	450 x 300	450 x 400
XL40	10.695	450 x 250	450 x 250	450 x 300	450 x 300	450 x 300	450 x 300	450 x 400
XL45	11.364	450 x 250	450 x 250	450 x 300	450 x 300	450 x 300	500 x 300	500 x 300
XL50	12.032	450 x 250	450 x 250	450 x 300	450 x 300	450 x 300	500 x 300	450 x 300
XL60	12.701	450 x 300	450 x 300	450 x 300	450 x 300	450 x 300	500 x 300	450 x 300
XL65	13.369	450 x 300	450 x 300	450 x 300	450 x 300	450 x 300	500 x 300	500 x 300
XL70	14.037	450 x 300	450 x 300	450 x 300	450 x 300	450 x 300	500 x 300	500 x 300
XL80	14.706	450 x 300	450 x 300	450 x 300	450 x 300	500 x 300	500 x 300	500 x 300
XL85	15.374	450 x 300	450 x 300	450 x 300	450 x 300	500 x 300	500 x 300	500 x 300
XL90	16.043	450 x 300	450 x 300	450 x 300	450 x 300	500 x 300	500 x 300	500 x 300
XL100	16.711	450 x 300	450 x 300	450 x 300	450 x 300	500 x 300	500 x 300	500 x 300
XL110	17.380	450 x 300	450 x 300	450 x 300	500 x 300	500 x 300	500 x 300	500 x 300
XL120	18.048	450 x 300	450 x 300	450 x 300	500 x 300	500 x 300	500 x 300	500 x 300
XL130	18.717	450 x 300	450 x 300	500 x 300	500 x 300	500 x 300	500 x 300	500 x 300
XL140	19.385	450 x 300	450 x 300	500 x 300	500 x 300	500 x 300	500 x 300	500 x 300
XL150	20.054	450 x 300	450 x 300	500 x 300	500 x 300	500 x 300	500 x 300	500 x 300

IMPORTANT NOTE: Ring beams can only be built from approved drawings issued by Pioneer Water Tanks.

RING BEAM FOUNDATION NOTES:

- Ring beam sizes shown are suitable for areas that do not experience cyclonic/seismic conditions. Special designs are required for cyclonic and seismic areas.
- It is very important for the client to ensure that foundation conditions are adequate. These are:
 - safe bearing capacity shall equal or exceed 150kPa.
 - the founding material shall be stable: landfill or active clay may be unsuitable.
- Most sands and gravels that have been compacted to a reasonable level will be adequate provided there is stable soil beneath.
- Should there be any doubt about the stability or strength of the foundation, site-specific professional engineering advice shall be sought by the client.
- If the tank is likely to experience large settlements (eg: softer clay type sites) consideration shall be given to articulated connections for pipework.
- In areas with corrosive soil conditions, special protective measures shall be used (eg: grade N40 concrete and all steel reinforcement galvanised).
- For tanks taller than two rings, Pioneer Water Tanks utilise a jacking system to construct the tank, elevating it one ring at a time. For tanks larger than 900,000 litres, an additional support bracket is anchored to the vertical face of the ring beam. To ensure this system can be properly employed, it is essential that ring beam specifications are strictly adhered to and that no adjacent concrete is poured prior to jacking. Any unauthorised alterations may inhibit construction and could adversely affect installation of your tank.

RING BEAM FOOTING DRAWING SAMPLE

PIONEER WATER TANKS RING BEAM DRAWING

Version: 16 Jul 16

WIND REGION 'A & B'

XL20-02

NOTES:

1. ALL WORKS SHALL BE IN ACCORDANCE WITH AS3600.
2. CONCRETE TO BE GRADE 32 TO AS445, VIBRATED, WITH 50mm x 10mm H.P.B. 10mm COARSE AGGREGATE. CONCRETE TO BE PLACED IN 150mm THICK LAYERS WITH 150mm x 10mm H.P.B. 10mm COARSE AGGREGATE.
3. CONCRETE TO BE 50mm MINIMUM FOR ACCESSIVE JOINTS AND TYPICAL 40mm SLAB LEVEL. UNDERLAPPING MINIMUM 40mm.
4. REINFORCEMENT SHALL BE 20mm AND 25mm IN ACCORDANCE WITH AS/NZS 4671.
5. REINFORCEMENT AND TIES SHALL BE 10mm MINIMUM FOR ALL JOINTS AND 10mm MINIMUM FOR ALL JOINTS.
6. IF FOUNDATION MATERIAL IS ACTIVE OR UNSTABLE, EXPERT ENGINEERING ADVICE SHALL BE SOUGHT.
7. DIFFERENT SIZE TANKS WITH DIFFERENT RING BEAMS OF DIFFERENT CROSS SECTIONS.
8. TANKS SHALL BE 10mm MINIMUM FOR ALL JOINTS AND 10mm MINIMUM FOR ALL JOINTS.
9. MINIMUM 3 DAYS CURE.
10. MINIMUM 10mm OF RING BEAM SHALL BE 10mm MINIMUM FOR ALL JOINTS.
11. MINIMUM 10mm OF RING BEAM SHALL BE 10mm MINIMUM FOR ALL JOINTS.

CONSTRUCTION TOLERANCES	
Dimension	Tolerance
Reinforcement	±1.0
Outside Diameter	±3.0
Level of 100 Butts	±2.0

PLATFORM LADDER JOINTS TO BE 150mm THICK WITH 150mm x 10mm H.P.B. 10mm COARSE AGGREGATE.

XL20 Tank 2153 mm DIAMETER

CL. 1.0000 1.2

150mm x 10mm H.P.B. 10mm COARSE AGGREGATE

150mm x 10mm H.P.B. 10mm COARSE AGGREGATE

150mm x 10mm H.P.B. 10mm COARSE AGGREGATE

150mm x 10mm H.P.B. 10mm COARSE AGGREGATE

150mm x 10mm H.P.B. 10mm COARSE AGGREGATE

150mm x 10mm H.P.B. 10mm COARSE AGGREGATE

150mm x 10mm H.P.B. 10mm COARSE AGGREGATE

150mm x 10mm H.P.B. 10mm COARSE AGGREGATE

150mm x 10mm H.P.B. 10mm COARSE AGGREGATE

150mm x 10mm H.P.B. 10mm COARSE AGGREGATE

150mm x 10mm H.P.B. 10mm COARSE AGGREGATE

150mm x 10mm H.P.B. 10mm COARSE AGGREGATE

150mm x 10mm H.P.B. 10mm COARSE AGGREGATE

150mm x 10mm H.P.B. 10mm COARSE AGGREGATE

150mm x 10mm H.P.B. 10mm COARSE AGGREGATE

150mm x 10mm H.P.B. 10mm COARSE AGGREGATE

150mm x 10mm H.P.B. 10mm COARSE AGGREGATE

150mm x 10mm H.P.B. 10mm COARSE AGGREGATE

150mm x 10mm H.P.B. 10mm COARSE AGGREGATE

150mm x 10mm H.P.B. 10mm COARSE AGGREGATE

150mm x 10mm H.P.B. 10mm COARSE AGGREGATE

150mm x 10mm H.P.B. 10mm COARSE AGGREGATE

150mm x 10mm H.P.B. 10mm COARSE AGGREGATE

150mm x 10mm H.P.B. 10mm COARSE AGGREGATE

150mm x 10mm H.P.B. 10mm COARSE AGGREGATE

150mm x 10mm H.P.B. 10mm COARSE AGGREGATE

150mm x 10mm H.P.B. 10mm COARSE AGGREGATE

150mm x 10mm H.P.B. 10mm COARSE AGGREGATE

150mm x 10mm H.P.B. 10mm COARSE AGGREGATE

150mm x 10mm H.P.B. 10mm COARSE AGGREGATE

150mm x 10mm H.P.B. 10mm COARSE AGGREGATE

150mm x 10mm H.P.B. 10mm COARSE AGGREGATE

150mm x 10mm H.P.B. 10mm COARSE AGGREGATE

150mm x 10mm H.P.B. 10mm COARSE AGGREGATE

150mm x 10mm H.P.B. 10mm COARSE AGGREGATE

150mm x 10mm H.P.B. 10mm COARSE AGGREGATE

150mm x 10mm H.P.B. 10mm COARSE AGGREGATE

150mm x 10mm H.P.B. 10mm COARSE AGGREGATE

150mm x 10mm H.P.B. 10mm COARSE AGGREGATE

150mm x 10mm H.P.B. 10mm COARSE AGGREGATE

150mm x 10mm H.P.B. 10mm COARSE AGGREGATE

150mm x 10mm H.P.B. 10mm COARSE AGGREGATE

150mm x 10mm H.P.B. 10mm COARSE AGGREGATE

150mm x 10mm H.P.B. 10mm COARSE AGGREGATE

150mm x 10mm H.P.B. 10mm COARSE AGGREGATE

150mm x 10mm H.P.B. 10mm COARSE AGGREGATE

150mm x 10mm H.P.B. 10mm COARSE AGGREGATE

150mm x 10mm H.P.B. 10mm COARSE AGGREGATE

150mm x 10mm H.P.B. 10mm COARSE AGGREGATE

150mm x 10mm H.P.B. 10mm COARSE AGGREGATE

150mm x 10mm H.P.B. 10mm COARSE AGGREGATE

150mm x 10mm H.P.B. 10mm COARSE AGGREGATE

150mm x 10mm H.P.B. 10mm COARSE AGGREGATE

150mm x 10mm H.P.B. 10mm COARSE AGGREGATE

150mm x 10mm H.P.B. 10mm COARSE AGGREGATE

150mm x 10mm H.P.B. 10mm COARSE AGGREGATE

150mm x 10mm H.P.B. 10mm COARSE AGGREGATE

150mm x 10mm H.P.B. 10mm COARSE AGGREGATE

150mm x 10mm H.P.B. 10mm COARSE AGGREGATE

150mm x 10mm H.P.B. 10mm COARSE AGGREGATE

150mm x 10mm H.P.B. 10mm COARSE AGGREGATE

150mm x 10mm H.P.B. 10mm COARSE AGGREGATE

150mm x 10mm H.P.B. 10mm COARSE AGGREGATE

150mm x 10mm H.P.B. 10mm COARSE AGGREGATE

150mm x 10mm H.P.B. 10mm COARSE AGGREGATE

150mm x 10mm H.P.B. 10mm COARSE AGGREGATE

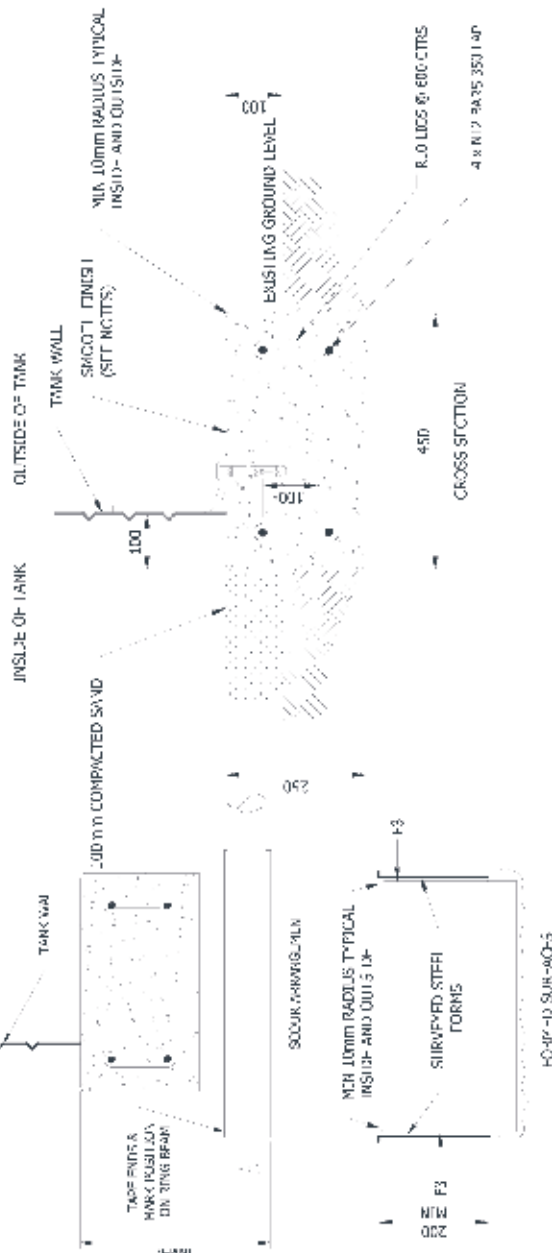
150mm x 10mm H.P.B. 10mm COARSE AGGREGATE

150mm x 10mm H.P.B. 10mm COARSE AGGREGATE

150mm x 10mm H.P.B. 10mm COARSE AGGREGATE

DRAWING NOTES

- INSIDE DIAMETER = 7153 mm
- OUTSIDE DIAMETER = 8053 mm
- EST RING BEAM VOLUME = 2.7 m³
- EST RING BEAM WEIGHT = 600 mm
- EST RING BEAM VOLUME = 0.67 m³



SAMPLE ONLY

Pioneer Water Tanks

23 Clayton Street
Belconnen, WA 6105
Phone: 08 9377 1777 Fax: 08 9377 1788
Email: info@pioneerwater.com.au

I CONFORM ON BEHALF OF THE CLIENT THE RING BEAM IS COMPLETE AND MATCHES THE DRAWING

Name (PRINT)
Signed
Date

JOB NUMBER: XL20-02
CLIENT: PIONEER WATER TANKS
DRAWING NO: PWD001 - R1
TANK: XL20-02
DATE: Tuesday, 20 October 2015
RING BEAM: 450mm WIDE x 250mm DEEP

PROJECT AND SITE SERVICES

Pioneer Water Tanks can offer a comprehensive range of project and site services for your water storage project.

Documentation

Sales documentation, contract administration, product specifications and pricing enabling your water storage project to proceed with confidence.

Project management

Providing comprehensive management and coordination of all aspects of your project for a safe, timely, cost effective delivery and installation.

Engineering and drafting

Custom designs, detailed drawings and professionally engineered storage solutions.

Construction

An experienced, efficient and professional installation team highly trained in safe methods of work and disciplined to operate within the strictest client site requirements.

Civil works

Provision of civil services including tank foundations (such as concrete ring beams).

Structural works

Including design, fabrication and erection of tank stands, platforms and ladders.

Plumbing

Supply and installation of pipe-work and fittings associated with your water storage project. Includes provision of automation such as level control and telemetry on water storage tanks.

Commissioning and maintenance

A comprehensive after-sales service, including full on-site commissioning of your storage tank(s) and the provision of ongoing preventive maintenance services, site inspections and reports.

Internal inspection using Remote Operated Vehicles (ROV) eliminate the need for down time and service interruptions.

Pioneer Water Tanks can provide swift response to rectify damage caused by external unplanned factors or accidents. In the unlikely event of a warranty or performance issue our professional staff will be on-site to provide quick assessment and corrective services.





Toll Free: 1300 886 927
Office: (08) 8331 8009
Email: sacommercial@pioneertanks.com

PIONEER WATER TANKS (SA)

Authorised South Australian Distributor

2a Duke Street, Beulah Park, South Australia 5067

The information contained in this catalogue is provided for informational purposes only and to the fullest extent permitted by law, without any representation or warranty of accuracy or completeness of information or other warranty of any kind including any implied warranty of quality, merchantability, fitness for a particular purpose or non-infringement.

Additionally, Pioneer Water Tanks Pty Ltd ("Pioneer Water Tanks") ABN 65 604 579 651 makes no representation whatsoever, either expressed or implied, in respect of information of third parties that appear in this catalogue.

Pioneer Water Tanks®, Aqualiner® and Industratex® are registered trademarks of Pioneer Water Tanks. Colorbond® and Colorbond Ultra® are registered trademarks of Bluescope Steel Ltd. Pioneer is not a designer of water management systems or a consultant in relation to their use. Recipients of this catalogue should make their own enquiries about the contents of this catalogue and independently verify the applicability, fitness for a particular purpose or suitability or liability with regard to the reliance on or use of any of the information in this catalogue or any Pioneer product. Pioneer will not be responsible for the consequences of reliance on any technical advice given by Pioneer employees, appointed distributors or sub contractors in relation to any matter other than those matters specific to the design, manufacture and installation (where applicable) of the Pioneer range of products.

Pioneer will be entitled at any time and without notice to change, update, modify, replace, discontinue, improve and delete any information or product in this catalogue.